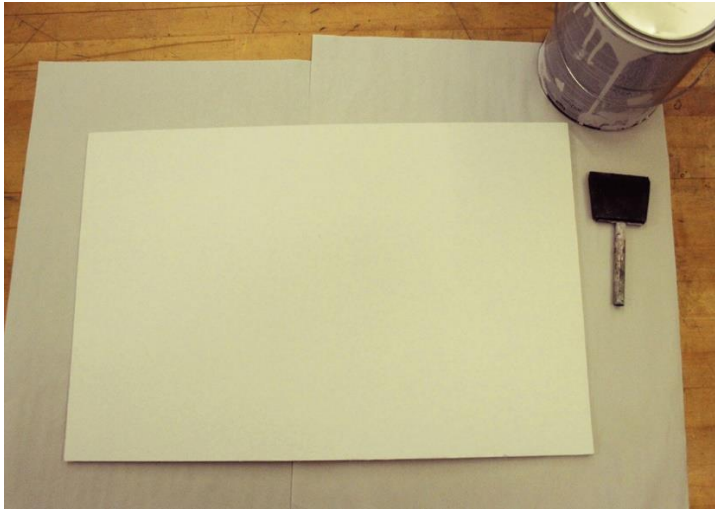


## Priming and the Process of Blocking-In



Prime your board with three thin layers of primer using the sponge brushes. There is no need to load a large amount of primer on the board with the first coat, the second coat will cover more significantly and smoothly, as will the third coat of primer.



Cover your board with a medium to dark value color. It is okay if the paint does not totally cover the white space, you will be building your painting in many layers of paint.

Number of colors used during this step: 1



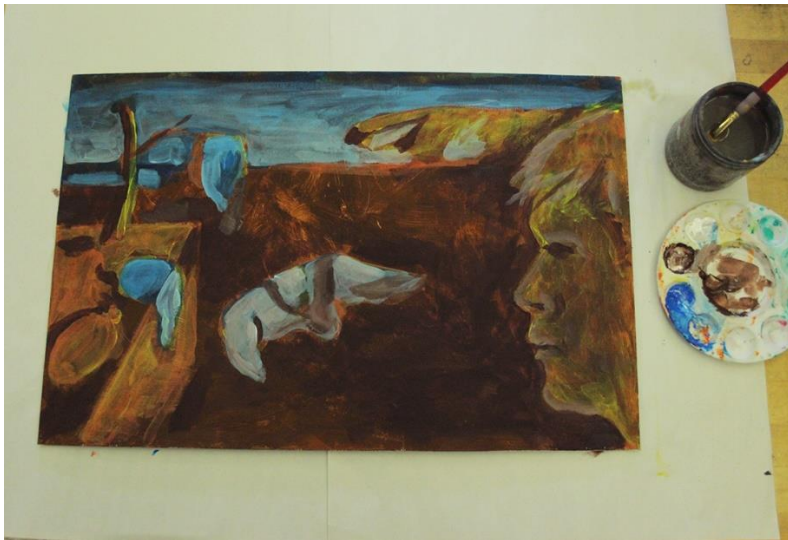
Use another paint color to sketch in the placement of your elements and establish your composition. You will not need much paint. Always use water.

Number of colors used during this step: 1



Start filling in and defining areas of basic value using only a few different colors. None of the elements will look finished as this is one of the first steps and many, many layers. Don't forget to use water!

The number of colors Mr. McCray used in this step: **3** - orange, yellow, blue



Continue to build with thin layers of paint applied with water. Using only a few colors, refine the value, color, and placement of your objects and areas. You may begin mixing colors at this stage of painting. Remember, no areas of your painting should be complete at this time. All layers are still in the early stages.

Numbers of colors Mr. McCray used during this step: **3** – blue, white, and brown